

MAGLATCH

Compliance Without Compromise



MagLatch VEPR 54r

MagLatch has two modes. Free State and Ban State. MagLatch is to be used in Ban State mode when under state regulation that prohibits detachable magazines with "evil features." Evil features include but are not limited to pistol grips, collapsible stocks, or flash hiders. To switch between modes simply field strip and remove the Modified Magazine and insert a unmodified magazine and reassemble firearm. **Modified Magazine** is Ban State mode. **Unmodified Magazine** is Free State mode. If using Free State mode while in a ban state you have constructed an illegal "Assault Weapon." By installing this device, the user of this product assumes all risks and liabilities. MagLatch and its affiliates are not responsible for the action or improper use of this product by the user.

MagLatch has not been approved by the CA DOJ. This device is designed to conform to the law as written in SB-880/AB 1135 which would define "fixed magazine" to mean an ammunition feeding device contained in, or permanently attached to, a firearm in such a manner that the device cannot be removed without disassembly of the firearm action.

INSTALLATION INSTRUCTIONS

Please read through all of the instructions before attempting install.

If necessary consult a qualified gunsmith to complete the install.

Before beginning, make sure your firearm is unloaded and chamber is clear.

- Remove dust cover, main spring, & bolt assembly.
- Install pre-assembled MagLatch unit with the latch facing the muzzle end of the firearm through the mag well and onto the rivet (Figure 1) in front of the trigger assembly. The unit must be rotated to get past the mag well.
- With provided 5/64 hex key, tighten each screw evenly until snug. Do not over-tighten. *It is recommended to use a ball-end hex key (not included).*
- Position MagLatch's latch center of your existing magazine catch. Ensure that MagLatch's latch is flush with the firearms magazine catch then tighten.
- **BEFORE INSERTING THE MAGAZINE:** Use the provided 0.9mm hex key tool to work the MagLatch and get a feel for how much pressure, what angle, and movement is required.
- You should feel very comfortable with MagLatch operation before inserting the magazine. Improper use of the latch will result in damage to the latch which may **permanently fix the magazine**. Removal may require damage to the firearm, unit or magazine. See Figures 2 and 3.
- Slowly insert the provided modified magazine. Before fully seating ensure there is no interference between the magazine and MagLatch. (If fitting is required, you can either file the magazine or face of the MagLatch unit.)
- Next, fully seat the magazine. Test your mag release and ensure that MagLatch is retaining the magazine. Once verified, remove your bullet button.
- *Optional:* After installation, remove one screw at a time from the MagLatch assembly and apply a retaining compound such as Loctite.
- Reassemble firearm.

If at any time you lose the provided 0.9mm hex key release tool you can always use a paper clip. Be sure to throw a few paper clips in your range bag to have for backup!

MODES OF MAGLATCH VEPR 54R:

- BAN STATE: Use MagLatch modified magazines for fixed magazine mode.
- FREE STATE: Use unmodified magazines for standard operation.

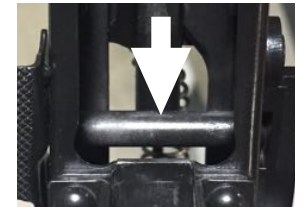


Figure 1

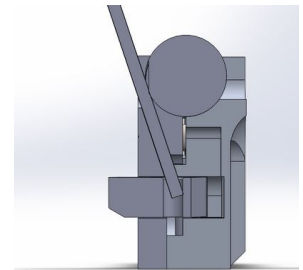


Figure 2 - CORRECT

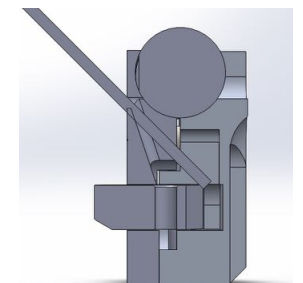


Figure 3 - INCORRECT