

MAGLATCH

Compliance Without Compromise



MagLatch CZ 805 Bren

MagLatch has two modes. Free State and Ban State. MagLatch is to be used in Ban State mode when under state regulation that prohibits detachable magazines with "evil features." Evil features include but are not limited to pistol grips, collapsible stocks, or flash hiders. To switch between modes simply separate your upper and lower receiver and rotate the set screw then reassemble firearm. **With MagLatch 805 Bren rotated counter-clockwise** you are in Ban State mode. **With MagLatch 805 Bren rotated clockwise** you are in Free State mode. If using Free State mode while in a ban state you have constructed an illegal "Assault Weapon." By installing this device, the user of this product assumes all risks and liabilities. MagLatch and its affiliates are not responsible for the action or improper use of this product by the user.

MagLatch has not been approved by the CA DOJ. This device is designed to conform to the law as written in SB-880/AB 1135 which would define "fixed magazine" to mean an ammunition feeding device contained in, or permanently attached to, a firearm in such a manner that the device cannot be removed without disassembly of the firearm action.

INSTALLATION INSTRUCTIONS

Please read through all of the instructions before attempting install.

If necessary consult a qualified gunsmith to complete the install.

Before beginning, make sure your firearm is unloaded and chamber is clear.

- Depress front take down pin and separate trigger pack from the upper receiver.
- Using a 5/64 punch remove the dowel pin. Fig 1.
- Separate the trigger pack and magazine well by sliding the mag well down and trigger pack upwards.
- Using a 1/16 punch remove the roll pin retaining the magazine release button and catch. Fig 2.
- Remove all existing magazine retention or bullet-button components, none will be used.
- Insert MagLatch Magazine Catch into receiver.
- Insert MagLatch Extended Magazine Release Button with spring into the opposite side of the receiver.
- Drop the 1/16 roll pin back in the hole, using a 1/16 punch push the roll pin by hand. Then use a hammer and 1/16 punch to depress the roll pin fully. Improper seating of the set screw will cause the magazine release assembly to catch on the mag well.
- Re-assemble the trigger pack and magazine well and re-install the dowel pin.
- Insert 10 round magazine into mag well.
- Using the provided 0.050" Allen Key rotate the pre-installed set screw on the magazine catch counter-clockwise 3-4 turns to enter Ban State Mode.
- Re-assemble lower receiver and insert the take down pin.

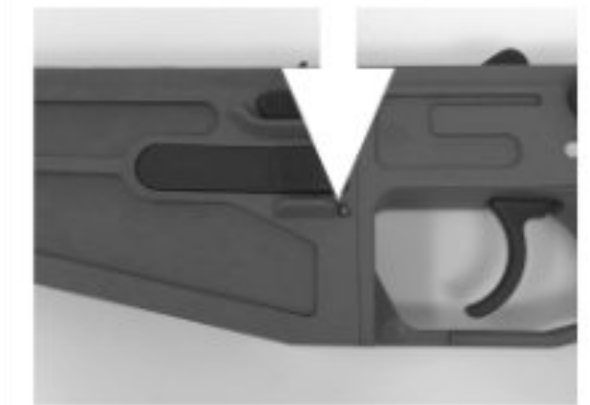


Figure 1



Figure 2

MODES OF MAGLATCH 805 BREN:

- BAN STATE: Rotate set screw counter-clockwise 3-4 turns. (Bottom out set screw to "free state" then back out)
- FREE STATE: Rotate set screw clockwise until it bottoms out.