

MAGLATCH

Compliance Without Compromise



MagLatch 9/40 10/45

MagLatch has two modes. Free State and Ban State. MagLatch is to be used in Ban State mode when under state regulation that prohibits detachable magazines with "evil features." Evil features include but are not limited to pistol grips, collapsible stocks, or flash hiders. To switch between modes simply separate your upper and lower and remove 1/16" allen screw retaining the magazine release. **MagLatch plug in** is Ban State mode. **MagLatch plug out** is Free State mode. If using Free State mode while in a ban state you have constructed an illegal "Assault Weapon." By installing this device, the user of this product assumes all risks and liabilities. MagLatch and its affiliates are not responsible for the action or improper use of this product by the user.

MagLatch has not been approved by the CA DOJ. This device is designed to conform to the law as written in SB-880/AB 1135 which would define "fixed magazine" to mean an ammunition feeding device contained in, or permanently attached to, a firearm in such a manner that the device cannot be removed without disassembly of the firearm action.

INSTALLATION INSTRUCTIONS

Please read through all of the instructions before attempting install.

If necessary consult a qualified gunsmith to complete the install.

Before beginning, make sure your firearm is unloaded and chamber is clear.

For OEM like appearance (not required) the following items should be installed and are not included in the kit: OEM magazine release. The OEM part closes a small gap surrounding the magazine release after removing the bullet-button. If you purchased or built after SB880 restrictions your firearm should already have the OEM component installed. Please see our website for a link to purchase this item if needed.

- Separate your upper and lower receiver by depressing the take down and pivot pins.
- Remove your existing bullet-button style magazine release using the included 1/16" allen wrench. Reinstall your catch or OEM catch.
- Slide MagLatch 9/40 10/45 into the recess between the magazine release and lower receiver. (Figure 1 & 2) MagLatch 9/40 10/45 should fit flush as seen in Figure 3. Flat side should face the magazine catch.
- Insert Magazine.
- Re-assemble upper and lower receiver.
- To remove MagLatch or change magazines, you must separate the upper and lower and remove the magazine release using the provided 1/16" allen wrench. Once the release is removed you are able to remove MagLatch.

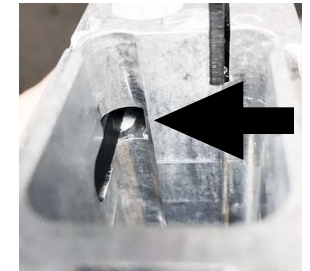


Figure 1



Figure 2



Figure 3

MODES OF MAGLATCH AK:

- BAN STATE: Use MagLatch 9/40 10/45 installed behind firearms magazine release catch.
- FREE STATE: Remove MagLatch 9/40 10/45.